



ANDALUSIA
COUNTRY CLUB

NEW HOMES PRICE LIST

January 2026

200 SERIES PLANS

		Home Price From	Homesite Price From	Total Price From
Plan 201	3 BD 3.5 BA 2,315 Sq. Ft.			
Includes a one bedroom casita and a two-car and golf cart garage. Spanish Transitional (A), Modern Mediterranean (B) or Desert Contemporary Exterior (C)		\$985,000	\$325,000	\$1,310,000
Plan 202	3 BD 3.5 BA 2,634 Sq. Ft.			
Includes a one bedroom casita and a two-car and golf cart garage. Spanish Transitional (A), Modern Mediterranean (B) or Desert Contemporary Exterior (C)		\$1,060,000	\$325,000	\$1,385,000
A \$50,000 Design Center Incentive is currently being offered for the 200 Series Plans. The typical 200 Series homesite is 55ft x 140 ft. 7,700 square feet. Actual dimensions vary depending upon location.				

300 SERIES PLANS

Plan 301	4 BD 4.5 BA 3,336 Sq. Ft.			
Includes a one bedroom casita and a two-car and golf cart garage. Spanish Transitional (A), Modern Mediterranean (B) or Desert Contemporary Exterior (C)		\$1,510,000	\$440,000	\$1,950,000
Plan 302	4 BD 4.5 BA 3,696 Sq. Ft.			
Includes a one bedroom casita and a two-car and golf cart garage. Spanish Transitional (A), Modern Mediterranean (B) or Desert Contemporary Exterior (C)		\$1,640,000	\$440,000	\$2,080,000
Plan 303	4 BD 4.5 BA 4,032 Sq. Ft.			
Includes a one bedroom casita and a two-car and golf cart garage. Spanish Transitional (A), Modern Mediterranean (B) or Desert Contemporary Exterior (C)		\$1,730,000	\$440,000	\$2,170,000
A \$100,000 Design Center Incentive is currently being offered for all 300 Series plans. The typical 300 Series homesite is 65 ft. x 180 ft. 11,700 square feet. Actual dimensions vary depending upon location.				

400 SERIES PLANS

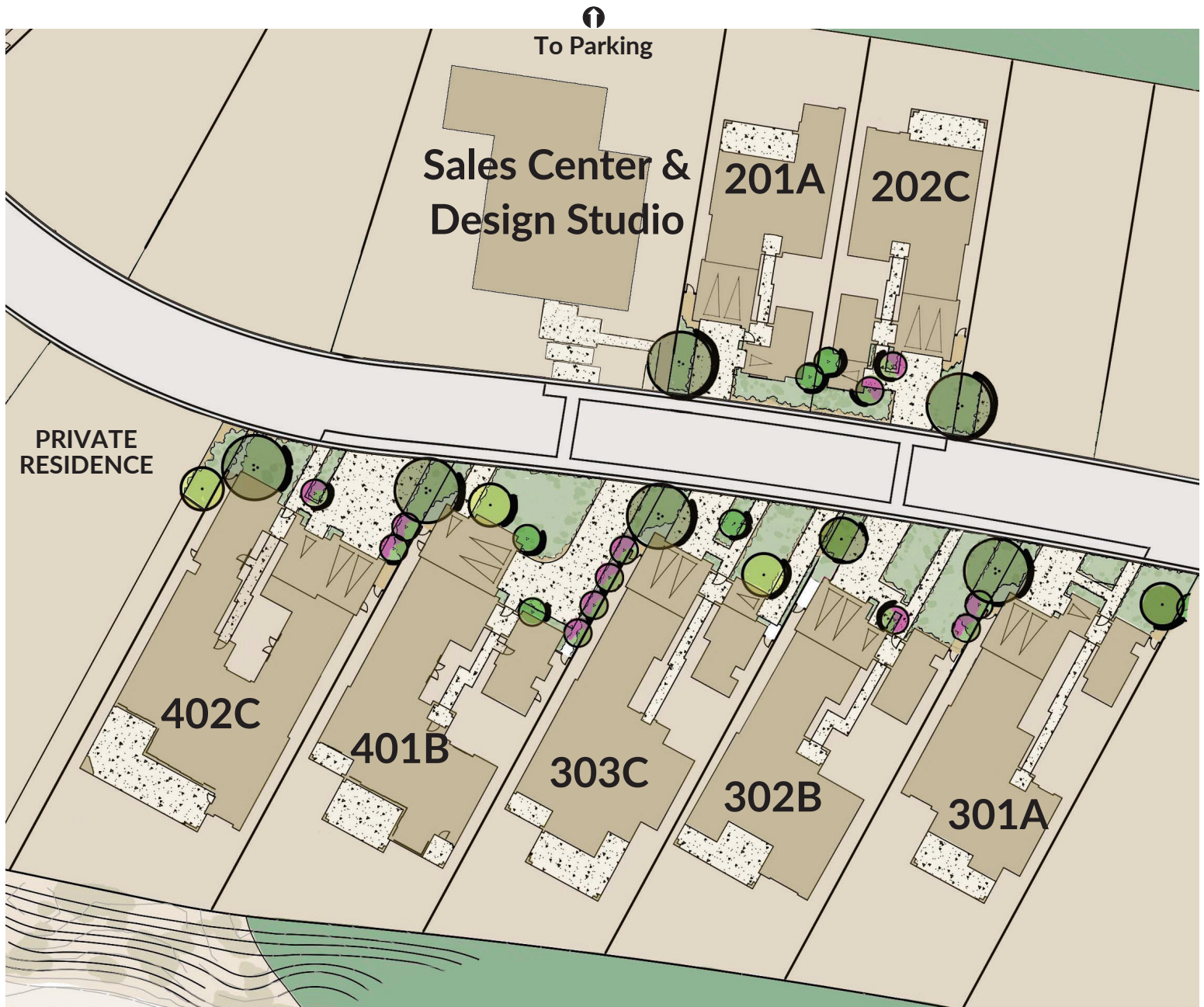
Plan 401	4 BD 4.5 BA 4,426 Sq. Ft.			
Includes a one bedroom casita and a three-car garage. Spanish Transitional (A), Modern Mediterranean (B) or Desert Contemporary Exterior (C)		\$1,835,000	\$530,000	\$2,365,000
Plan 402	4 BD 4.5 BA 5,090 Sq. Ft.			
Includes a one bedroom casita and a three-car garage. Spanish Transitional (A), Modern Mediterranean (B) or Desert Contemporary Exterior (C)		\$2,115,000	\$530,000	\$2,645,000
A \$150,000 Design Center Incentive is currently being offered for all 400 Series plans. The typical 400 Series homesite is 75 ft. x 180 ft. 13,500 square feet. Actual dimensions vary depending upon location.				

NEW HOME COLLECTION

Our seven distinctive plans range from 2,300 to over 5,100 square feet, with designs conceived to allow a full range of customization. Select your preferred floor plan and lot, and our professional interior designers will work with you to create a home that's tailored specifically for you. Homes feature designer kitchens and separate casitas to private covered patios and artfully landscaped courtyards.


Simply choose from any of the spectacular homesites available, select one of the residences below, customize it with an infinite number of selections and let the Andalusia Sales, Design and Construction team build you the home of your dreams.

MAP OF 7 NEW MODEL HOMES!



760-777-1000 ▪ AndalusiaCC.com
59140 Marbella ▪ La Quinta, California 92253

THE TOTAL NUMBER, DESIGN AND LOCATION OF HOMES; UNIT MIX; AND THE LOCATION, DESIGN AND LAYOUT OF RECREATIONAL FACILITIES MAY BE CHANGED DUE TO A NUMBER OF CIRCUMSTANCES, INCLUDING GOVERNMENTAL REQUIREMENTS AND MARKET DEMAND. DIMENSIONS ARE APPROXIMATE IN NATURE AND ARE NOT INTENDED FOR FINAL REFERENCE. SUNRISE COMPANY/ANDALUSIA HOMES, INC. RESERVES THE RIGHT TO CHANGE HOMESITE AND HOME PRICES AND MAKE MODIFICATIONS IN MATERIALS AND SPECIFICATIONS AT ANY TIME WITHOUT PRIOR NOTICE. VOID WHERE PROHIBITED BY LAW.

 **SUNRISE**
COMPANY For Over Sixty Years, Builder of America's Finest Communities.

