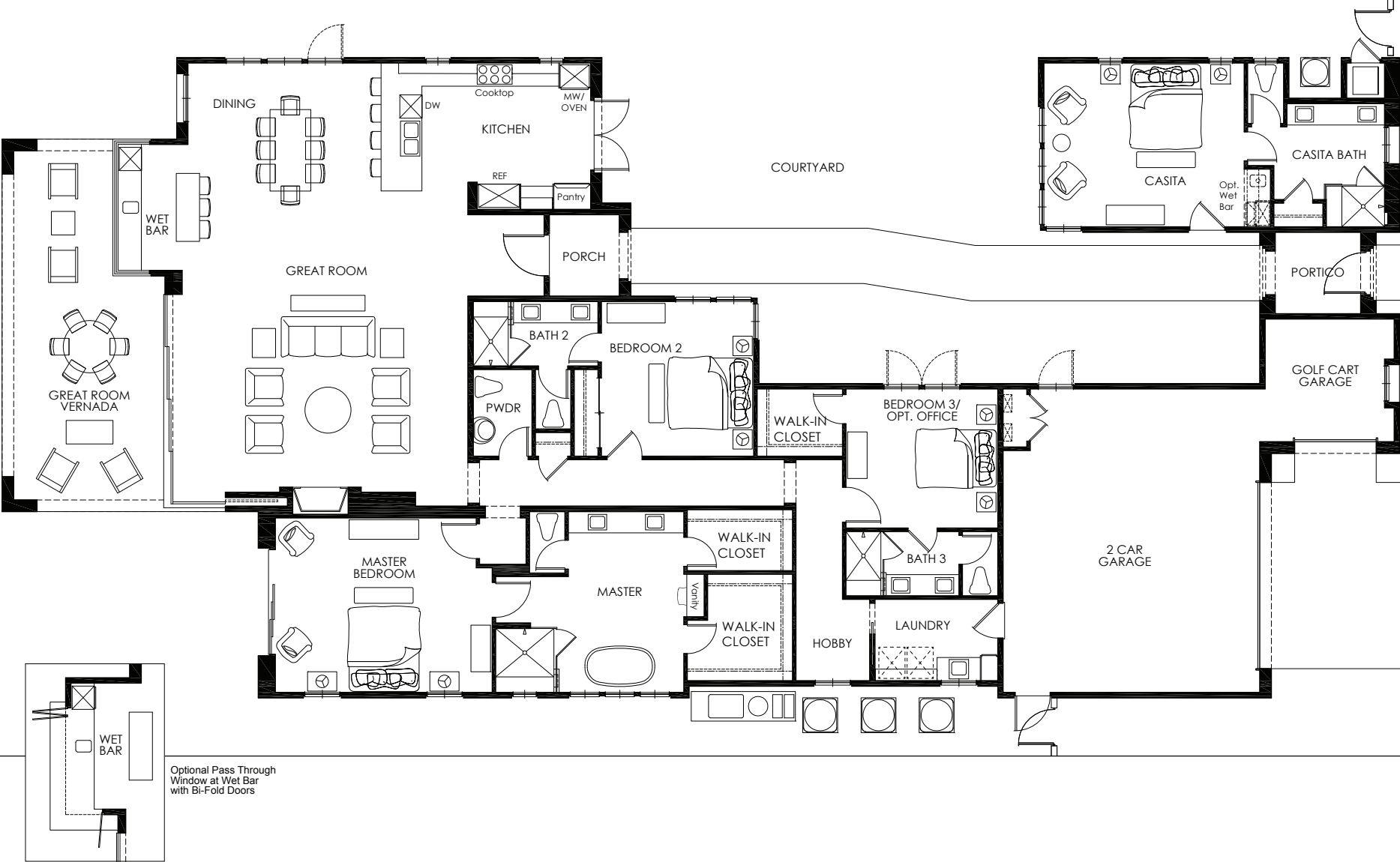




RESIDENCE 301
3,333 SQ. FT.



DESIGN FINISHES & FEATURES

ARCHITECTURAL AND DESIGN FEATURES

- Professionally landscaped and HOA maintained front yard landscaping with automatic high-efficiency drip irrigation system.
- Richly detailed architectural styles - Spanish Transitional, Modern Mediterranean and Desert Contemporary
- Elegant entry courtyard with wrought iron gate
- Driveways and front walkways feature architectural pavers
- 2-car garage and golf cart garage with steel sectional garage doors, finished dry wall, painted interior and electric outlets
- Elegant full panel glass fiberglass entry door with hardware
- Custom color roof blends with concrete roof tiles
- Dual-glazed Low-E windows and slider
- Porcelain tile flooring in entry, kitchen, wet bar, all baths and laundry room
- Rounded or contemporary square drywall corner detailing
- 8' interior doors with lever-style door hardware
- Contemporary rocker-style light switches
- Water-efficient elongated toilets throughout

GOURMET KITCHEN & LAUNDRY FEATURES

- Built-in Wolf, Sub-Zero and Asko appliances:
- Wolf 36-inch Gas Rangetop with stainless hood
- Wolf 30-inch built-in Microwave and Wall Oven
- Asko Dishwasher
- Sub-Zero 42-inch side-by-side Refrigerator/Freezer
- Sub-Zero 24-inch under counter Wine Cooler
- Countertops feature quartz slab with full splash at cooktop

- Designer-series cabinets with hardware
- Laundry room with built-in cabinetry, sink and quartz countertops

MASTER SUITE, SECONDARY BEDROOM, CASITA AND BATH FEATURE

- Impressive master suite with en-suite bathroom
- Spacious walk-in closet in master
- Designer-series cabinets with drawer pulls
- Lavish walk-in showers with frameless clear glass shower doors
- Quartz slab countertops with 6" backsplash
- Casita with private entrance and en-suite bathroom
- Two guest rooms each with their own en-suite bathroom

OTHER QUALITY FEATURES

- Dramatic entry with high foyer
- Disappearing corner 10' sliding glass doors
- Custom-designed recessed lighting
- Wiring installed for security and sound systems
- 8-foot solid core interior doors with raised panels
- Fireplace in great room
- Recirculating hot water system
- Kohler plumbing fixtures throughout
- Under-mounted kitchen and bath sinks
- Dual-zoned and thermostatically controlled central air conditioning and heating system
- Energy efficient LED lighting throughout the home
- Solar power system (size varies per plan) providing clean power and energy savings

A wide array of custom features are available at our Design Studio.



With stunning views of the Santa Rosa and Coral Mountains, Andalusia Country Club is a resort community where Members enjoy Rees Jones golf, fitness, tennis, pickleball, dining and a full calendar of social and recreational events. Luxury new homes range from 2,315 to over 5,000 sq. ft. and each home includes a Sports Club Membership.

760.777.1000 • AndalusiaCC.com

59140 Marbella • La Quinta, California 92253

THE TOTAL NUMBER, DESIGN AND LOCATION OF HOMES; UNIT MIX; AND THE LOCATION, DESIGN AND LAYOUT OF RECREATIONAL FACILITIES MAY BE CHANGED DUE TO A NUMBER OF CIRCUMSTANCES, INCLUDING GOVERNMENTAL REQUIREMENTS AND MARKET DEMAND. DIMENSIONS ARE APPROXIMATE IN NATURE AND ARE NOT INTENDED FOR FINAL REFERENCE. SUNRISE COMPANY/ANDALUSIA HOMES, INC. RESERVES THE RIGHT TO CHANGE HOMESITE AND HOME PRICES AND MAKE MODIFICATIONS IN MATERIALS AND SPECIFICATIONS AT ANY TIME WITHOUT PRIOR NOTICE. VOID WHERE PROHIBITED BY LAW. NOVEMBER 2022

