



ANDALUSIA

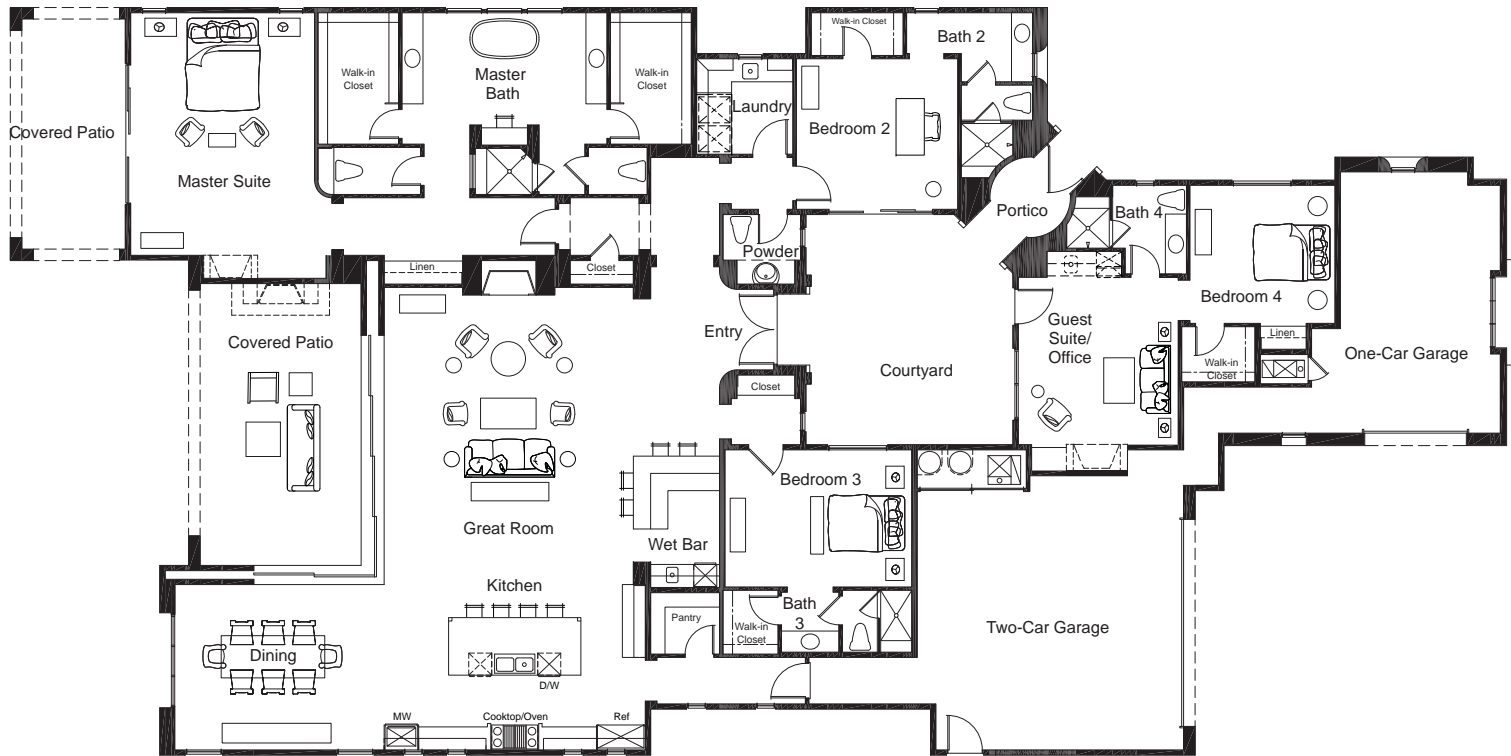
COUNTRY CLUB



RESIDENCE 424
4,184 SQ. FT. • 4 BED • 4 ½ BATH

RESIDENCE 424

4,184 SQ. FT.



HIGHLIGHTS

- Four Bedrooms each with en-suite bathroom including an attached Casita with private entrance
- Approximately 588 sq. ft. of Covered Patio
- Dramatic 12' Disappearing Sliding Glass Pocket Doors
- Private Interior Courtyard
- Three-Car Garage

Scale: 3/32" = 1'

EXTERIOR ELEVATIONS



Romanesque - A



Mediterranean Revival - B



Spanish Colonial - C

DESIGN FINISHES & FEATURES

ARCHITECTURAL AND DESIGN FEATURES

- Professionally landscaped and maintained street scene
- Elegant entry courtyard with wrought iron gate
- Driveways feature architectural pavers
- 3-car garage with custom cedar, stained, garage doors—finished dry wall, painted interior and electric outlets
- Handmade iron entry door with glass inset and custom quality wrought iron hardware
- Select color roof blends with S-shaped concrete roof tiles
- Ceramic tile or brick detailing on most homes
- Dual-glazed Low-E windows
- Scrolled metal light fixtures
- Architecturally recessed windows
- Porcelain tile flooring in entry, kitchen, wet bar, all baths and laundry room

GOURMET KITCHEN & LAUNDRY FEATURES

- Countertops feature Caesarstone slab with full splash at cooktop
- Built-in Wolf, Sub-Zero and Asko appliances:
 - Wolf 48-inch Gas Range
 - Wolf 30-inch Warming Drawer
 - Wolf 30-inch Drawer Microwave
 - Asko Dishwasher
 - Sub-Zero 48-inch side-by-side Refrigerator/Freezer
 - Sub-Zero 24-inch under counter Wine Cooler
- Designer-selected wood cabinets with drawer pulls
- Laundry room with built-in wood cabinetry and Caesarstone countertops

MASTER SUITE, SECONDARY BEDROOM, CASITA AND BATH FEATURE

- Two walk-in closets in master
- Free-standing tub in master bath
- Frameless clear glass shower doors
- Caesarstone slab countertops
- Ceiling fan outlets in all bedrooms

OTHER QUALITY FEATURES

- Dramatic entry with high foyer
- Casita with private entrance
- Disappearing 12' sliding glass doors
- Custom-designed recessed and soffit lighting
- Wiring installed for security and sound systems
- 8-foot solid core interior doors with raised panels
- Fireplace in great room
- Recirculating hot water system
- Kohler plumbing fixtures throughout
- Under-mounted kitchen and bath sinks
- Dual-zoned and thermostatically controlled central air conditioning and heating system
- Energy efficient LED lighting throughout the home
- Solar power system (size varies per plan) providing clean power and energy savings

A wide array of custom features are available at our Design Center.



With stunning views of the Santa Rosa and Coral Mountains, Andalusia Country Club is a resort community where Members enjoy Rees Jones golf, fitness, tennis, pickleball, dining and a full calendar of social and recreational events. Luxury new homes range from \$1.1 to \$1.8 Million and each home includes a Sports Club Membership.

760.777.1000 • AndalusiaCC.com
81770 Andalusia • La Quinta, California 92253

